

WEARTECH® SHS™ 8000HV

Hardfacing - Severe Abrasion, Thermal Spray Powder

Application Process

High Velocity Oxy-Fuel
Thermal Spraying (THSP-HVOF)

Material Chemistry (wt%)

Chromium	< 22%
Boron	< 6%
Molybdenum	< 5%
Niobium	< 5%
Carbon	< 2%
Manganese	< 1%
Silicon	< 1%
Iron	Balance

Microhardness (HVO .3)

1,000 kg/mm² typical

Wear Resistance

ASTM G65-04 Procedure B
Typical mass loss 0.07 g

Bond Strength

ASTM C633-01
10 ksi (69 MPa)

Coating Description

SHS8000HV is a glass forming iron based alloy that forms a nanocomposite comprised of a mixed amorphous and nanoscale microstructure when sprayed as a coating. SHS8000HV features exceptionally high wear resistance exceeding chrome plating, and approaching CerMets and carbides.

Key Performance Characteristics

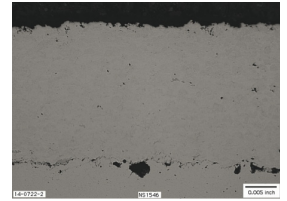
- Excels in high abrasion, erosion environments, both wet and dry
- Very good metal to metal (two body) wear resistance
- Superior bond strength without necessity of bond coat
- Can be finished to very high surface specifications

SHS8000HV coatings exhibit excellent wear resistance and superior bond strength. Superior bond strength values signify that this material has exceptional adhesion and cohesion. This also highlights the material's extremely low residual stress (even at high thicknesses) inherent in this coating type. The probability of "pull-out" of individual particles during wear, erosion and other service conditions is extremely low. Low coating permeability results in a corrosion resistant barrier. Low oxide content contributes to high bond strength due to the very limited presence of internal voids and other defects. These characteristics provide predictable coating performance across a broad variety of service environments.

Industrial Uses

Power Generation
Pulp & Paper

Coating Microstructure



Optical micrograph at 100X of a typical SHS8000HV coating on a mild steel substrate.

CUSTOMER ASSISTANCE POLICY

The Lincoln Electric Company is manufacturing and selling high quality welding equipment, consumables, and cutting equipment. Our challenge is to meet the needs of our customers and to exceed their expectations. On occasion, purchasers may ask Lincoln Electric for information or advice about their use of our products. Our employees respond to inquiries to the best of their ability based on information provided to them by the customers and the knowledge they may have concerning the application. Our employees, however, are not in a position to verify the information provided or to evaluate the engineering requirements for the particular weldment. Accordingly, Lincoln Electric does not warrant or guarantee or assume any liability with respect to such information or advice. Moreover, the provision of such information or advice does not create, expand, or alter any warranty on our products. Any express or implied warranty that might arise from the information or advice, including any implied warranty of merchantability or any warranty of fitness for any customers' particular purpose is specifically disclaimed.

Lincoln Electric is a responsive manufacturer, but the selection and use of specific products sold by Lincoln Electric is solely within the control of, and remains the sole responsibility of the customer. Many variables beyond the control of Lincoln Electric affect the results obtained in applying these types of fabrication methods and service requirements.

Subject to Change – This information is accurate to the best of our knowledge at the time of printing. Please refer to www.lincolnelectric.com for any updated information.